

Socket CF Mag Stripe Reader Card 4E



Turn Your Pocket PC or Windows XP Tablet into a Mobile Point of Sale (POS) Terminal

The Socket CF Mag Stripe Reader Card 4E reads data from one, two, or three track magnetic stripes on ID cards, driver's licenses or credit cards into a Pocket PC, laptop, or tablet PC. The card works on Pocket PC (Windows Mobile) devices running Windows CE.NET v4.2 or later and Windows XP laptops and tablets. It's the perfect solution for mobile Point of Sale applications. If your Pocket PC or Windows XP computer has wireless connectivity, you can even perform credit card authorizations on the go.



The Socket CF Mag Stripe Reader Card 4E is supported by the same SocketScan software and SDK used with all of Socket's bar code scanning and RFID products. SocketScan software enters data directly into any Windows application as if it were manually typed — no custom programming is required. The SocketScan SDK (not included) is required for more complex applications using parsed or encrypted data.



Compact and Energy-Efficient Design

No batteries or power adapter are needed — the sleek and compact CF Mag Stripe Reader Card draws power from the host computer. The card's exclusive *Mobility Friendly™* design uses minimal power, with only 7 mA in standby mode, to maximize the battery life of your Pocket PC or Windows XP computer.



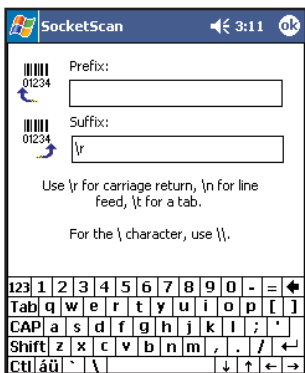
The card is ideal for mobile Point of Sale and security ID applications.

FEATURES

- Reads the data from 1, 2 or 3 track magnetic stripes used on driver's licenses, credit and ID cards
- Two color LED indicates good or bad read
- Compatible devices:
 - Pocket PC (Windows Mobile) devices running Windows CE.NET v4.2 or greater
 - Windows XP laptop or tablet PC support in Q1 2006
- Type I CF card with integrated Mag Stripe reader plugs into Type I or Type II CompactFlash card slot.
- With CF-to-PC Card adapter, the card works in a PC Card (PCMCIA) slot*
- Supported by the same SocketScan keyboard emulation software and SDK that supports all Socket bar code scanning and RFID products
- SocketScan enables you to assign a beep tone or .WAV file to signify a successful read
- Two year warranty
- No extra batteries or special power adapter required — the CF Mag Stripe Reader Card gets power from the mobile computer
- SDK available to application developers
- Works with Windows-based development tools so you can easily create custom applications

Socket CF Mag Stripe Reader Card 4E

Product# MS5103-661



SocketScan lets you assign prefix and suffix characters to further eliminate manual keystrokes.

SPECIFICATIONS

Physical Characteristics:

L x W x H: 2.7 x 2.2 x 1.3 inches

(69 x 55 x 34 mm)

Total Mass: Approx. 1.73 oz (49 g)

Power Consumption (with 3.3 V):

Standby: 7 mA (23.1 mW)

Maximum: 12 mA (39.6 mW)

Environmental Conditions:

Operating Temperature:

+14 to +140°F (-10 to +60°C)

Operating Relative Humidity:

10-90% non-condensing

Operating System Support:

- Windows Mobile 5.0, 2003/2003SE

- Windows XP, XP Tablet Edition
support available Q1 2006

Interface Standards:

CompactFlash Type I

Baud Rate: 19,200 bps

Mag Stripe Reader Data Structure:

STX, DATA, CR, LF

SocketScan and SDK Data Structure:

DATA

Magnetic Card Format: ISO TK1&2&3

Card Swiping Speed: 3-50 ips

Card Swiping Direction: Bi-directional

Included Software:

- Installation utility
- SocketScan™ with keyboard emulation for Windows Mobile and XP

SocketScan™ Software:

- Reads magnetic stripe data into any Windows application as if it were manually typed
- Lets you add Prefixes and/or Suffixes (e.g., Carriage Return or Tab) to further eliminate manual keystrokes
- Lets you assign a beep tone or .WAV file to signal a good read

Warranty: Two years

Certification:

FCC: Part 15, Class B

CE: EN55024:1998

SocketScan SDK for Windows available for developers. Please visit:

www.socketcom.com/embedded/socketscan.asp?Status=Developer

ADDITIONAL PRODUCT INFORMATION

Web: www.socketcom.com

SALES OFFICES :
Corporate Headquarters:
37400 Central Court
Newark, CA 94560
USA

Phone: 510-744-2700

Toll Free (USA): 800-552-3300

Fax: 510-744-2727

Online: www.socketcom.com/contact

